



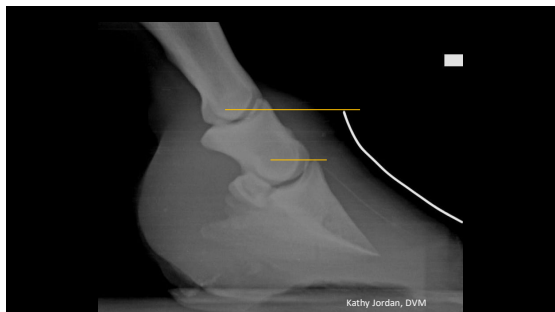
1



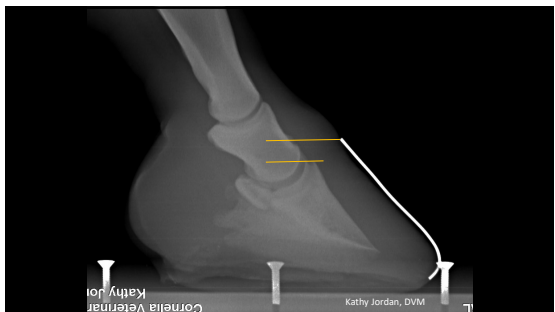
2



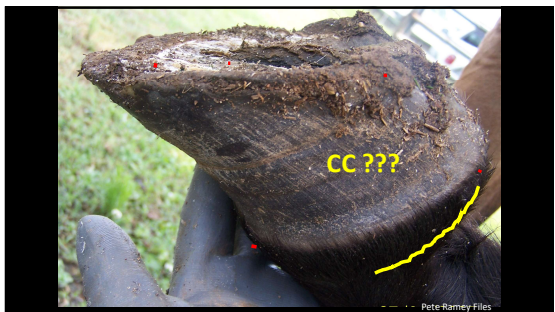
3



4



5



6



7



8



9



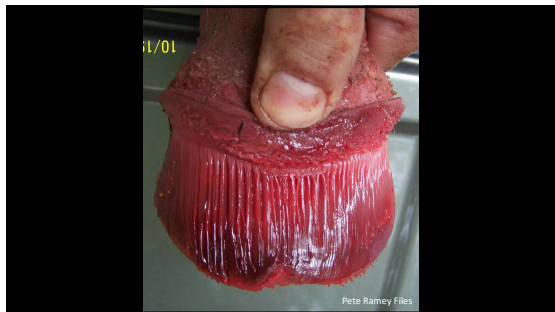
10



11



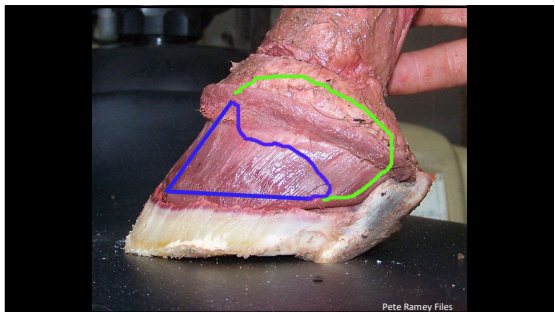
12



13



14



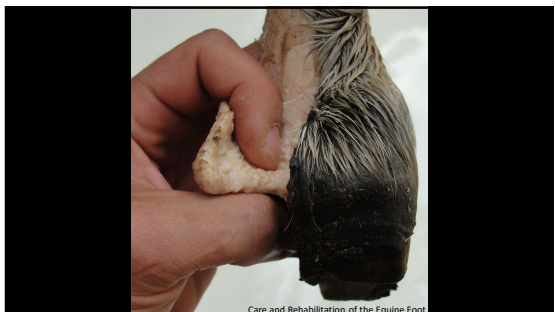
15



16



17



18



19



20



21



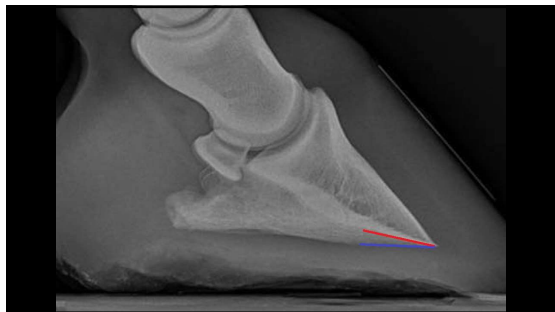
22



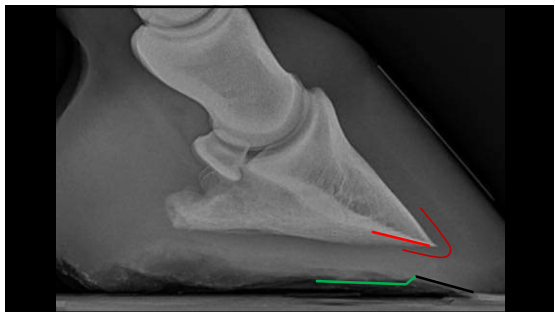
23



24



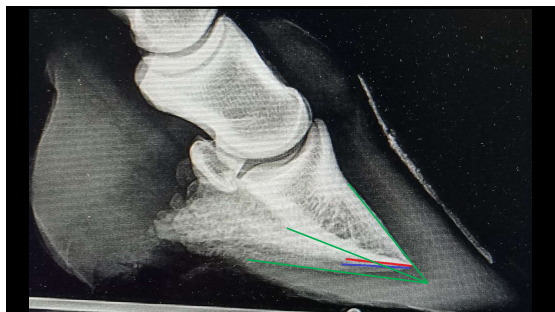
25



26



27



28




29

Protection of the solar corium seems to be the CRUX of dealing with hoof capsule rotation and "sinker" cases.

What the solar corium needs most is adequate armor –

1/2" - 5/8" (12-15mm) thickness of well-callused sole, bar, and frog tissue.




30

And...

The sole, frog, and bar coriums handle pressure well
JF that pressure is 100% released whenever the foot is in flight.


Steady pressure without release may cause bruising, abscessing, corium damage, P3 remodeling...



31

We will discuss numerous tactics for building adequate sole thickness...

... but the most important one is being sure you never trim sole from a thin-soled horse (same with thin frogs and thin bars).

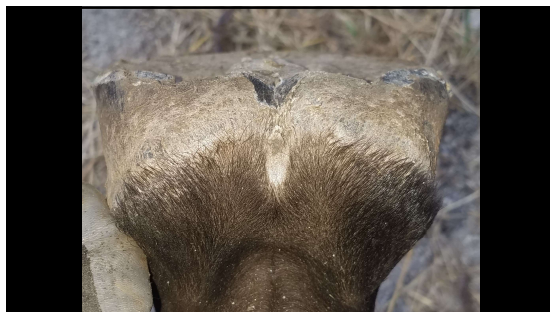


32



Bar, sole, frog –
If it's thin, leave it dirty

33




34



35

What tricks people into excessively thinning soles?
Or – *why do people cut sole from thin-soled horses?*

- 1) Foot with deep CE appears “too long”
- 2) Exfoliation
- 3) Trimming down into sole and wall to find “clean” white line.
- 4) Relief of sole pressure (but remember it is pressure to the solar corium we should worry about).



36

#1) Reading the Foot – Thinking Vertically 2022 PHCP



37

WLD soaking and Care:
Hoof Rehab.com

Click Articles

Click ["The End of White Line Disease"](#)

38

What tricks people into excessively thinning soles?
Or – *why do people cut sole from thin-soled horses?*

- 1) Foot with deep CE appears "too long"
- 2) Exfoliation
- 3) Trimming down into sole and wall to find "clean" white line.
- 4) Relief of sole pressure (but remember it is pressure to the solar corium we should worry about).

39

What tricks people into excessively thinning soles?

- 5) "Cleaning" or exfoliating.
- 6) Chasing flared bars and bent or distorted tubules.
- 7) Attempting to achieve specific heel heights relative to the (very mobile) coronet/hairline location.
- 8) Bringing weight-bearing back.

40

What tricks people into excessively thinning sole?

- 9) Trimming toe walls to a specific length relative to the current location of the hairline.
- 10) "Standing up" a flared or rotated foot.
- 11) Deep CE – making the foot look more normal externally.

41

What tricks people into excessively thinning soles?
Or – *why do people cut sole from thin-soled horses?*

- 12) Taking sole from heel and/or toe to eliminate the natural arch of the quarters (shoers). Cutting sole from the quarters to artificially enhance that arch (barefoot trimmers).

42



43



44



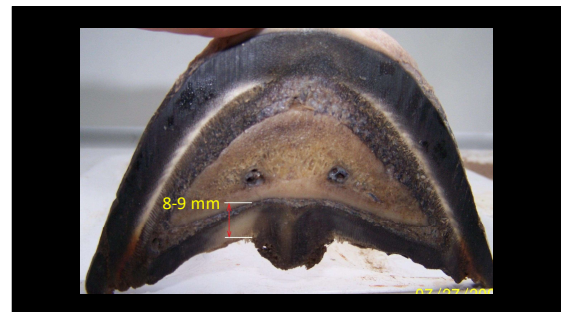
45



46



47



48



49



50



51

Collateral groove to corium tends to be 9mm (3/8")

Key exceptions:

- 1) Microbial infection has eaten the collateral groove deeper.
- 2) Previous abscess under collateral groove – usually a simultaneous abscess of both the frog and solar corium.
- 3) Dry and tight – the information is correct, but we can't access it.

52

What tricks people into excessively thinning soles?
Or – *why do people cut sole from thin-soled horses?*

12) Attempting to carve, rather than build up solar concavity

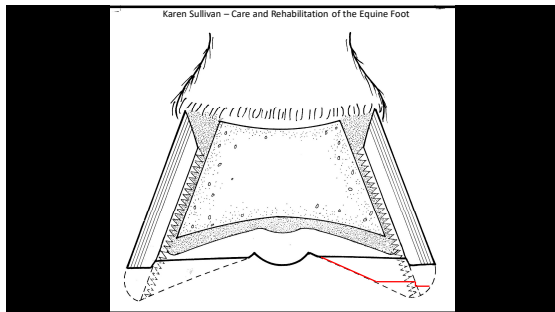
NO!

53

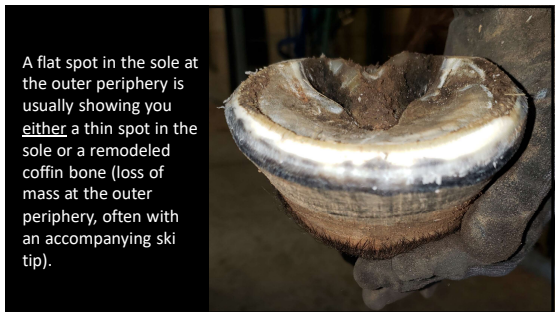
What tricks people into excessively thinning soles?
Or – *why do people cut sole from thin-soled horses?*

12) Attempting to carve, rather than build up solar concavity

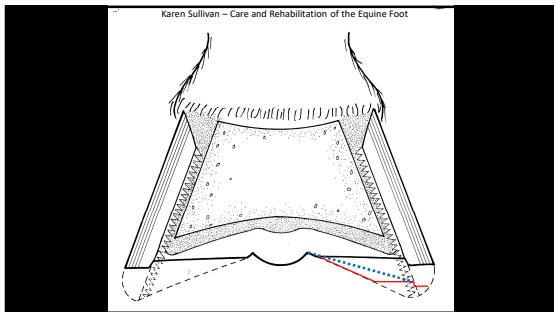
54



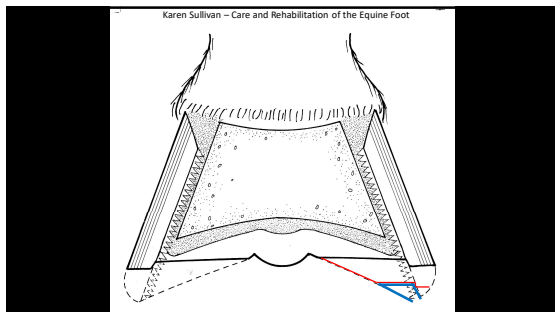
55



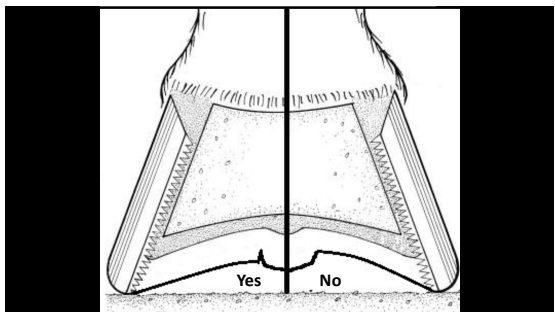
56



57



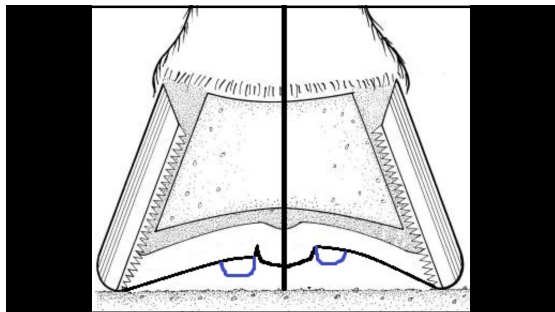
58



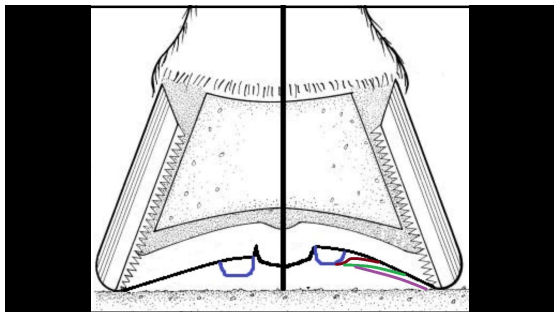
59



60



61



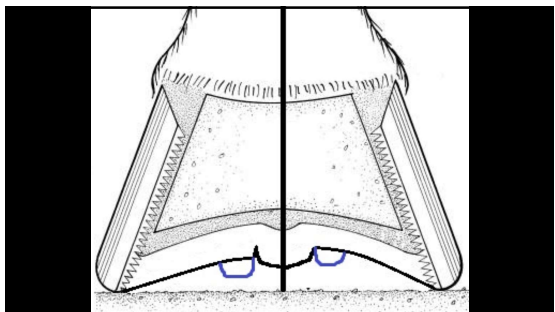
62



63



64



65



66



67



68



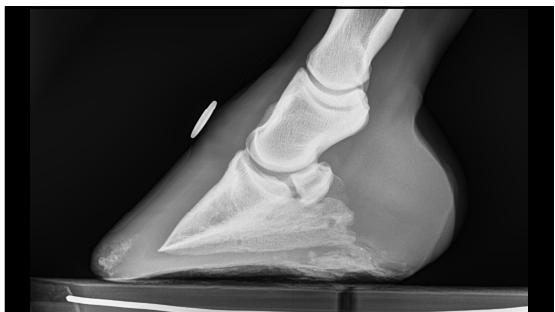
69



70



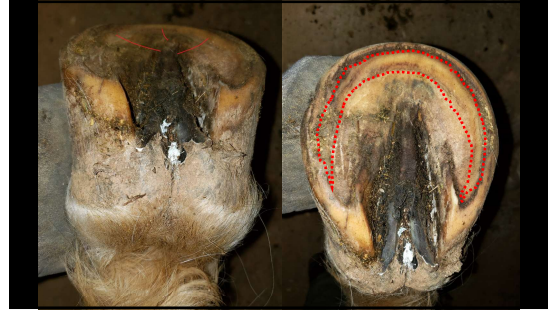
71



72



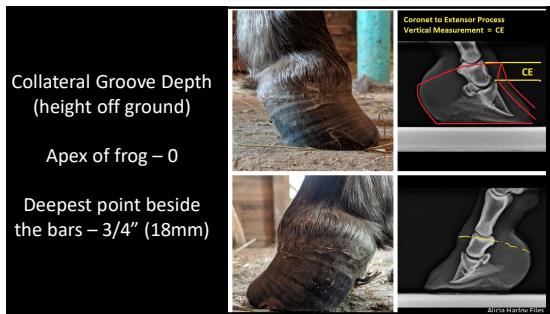
73



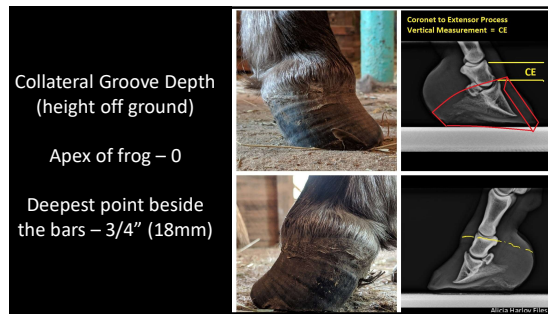
74



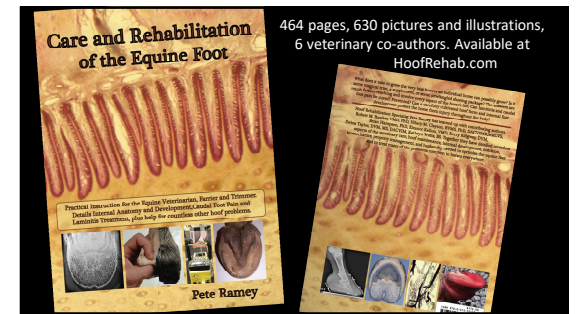
75



76



77



78